

A&D
GROUP

LUXURY INDIAN INTERIORS

PERSPECTIVE OF THE NEW INDIAN AESTHETICS





A beautiful white jaali greets one with suspense, beholding the space behind it leading one's eyes to the upper floor, thus creating an innate connection between both floors.

PORES 34

This renovation project saw the architects selectively dismantling interior walls after meticulous evaluation in an effort to help a choking residence breathe better.

Location **New Delhi**

Design Firm **Studio An-V-Thot Architects**

Built-Up Area **5000 sq ft**

Completion **August 2015**

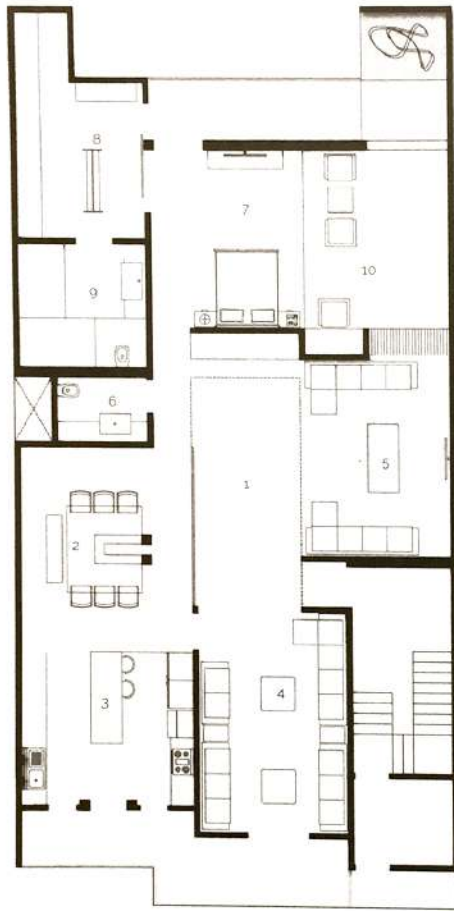
1⁹⁸⁰ A not-so-busy road in Western Delhi led to a not-so-dense locality, amidst a not-so-chaotic neighbourhood, where stood a freshly built residence praised for its grandeur.

2⁰¹³ A very busy road in Western Delhi led to a dense locality, amidst a chaotic neighbourhood, where a young boy stood looking at it in desperation for a change that would resonate with the present times.

This boy and his father eventually approached the architects together, with an intent to build their dream home. The expansion of the family had led to an increased space requirement, and the challenge was to enhance the old structure. The design solution, therefore, de-cluttered the interiors: the house was rejuvenated and allowed to breathe after several years. The architects opened up the spatial layout into an open-floor plan, crafting an airy two-storeyed duplex.

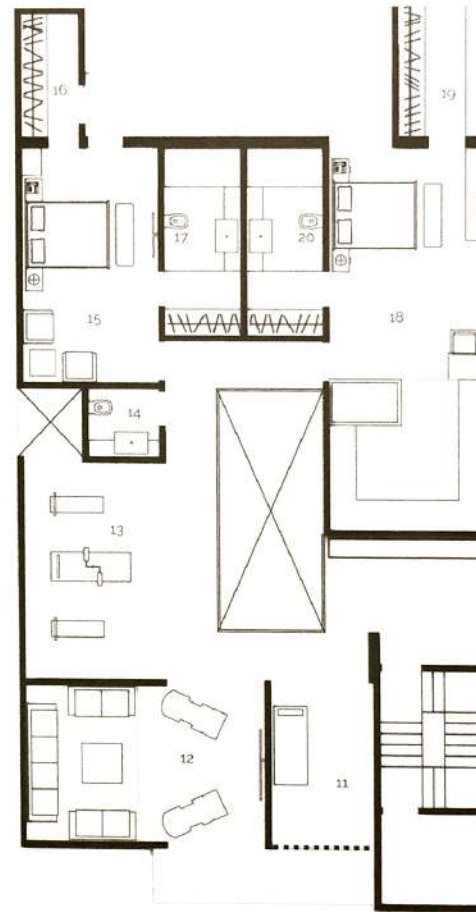
The lower floor houses the semi-public functions and a master suite. As one enters the house, a giant white *jaali* wall welcomes them, beholding the space behind it. This *jaali* acts as a partition between the dining and the double-heighted central lobby space, and creates an innate connection between the floors. The master suite was crafted out of two old bedrooms: it features a vertical garden wall and opens up to a terrace-cum-courtyard. The living space that provides two distinct sit-out areas has been developed in a formal aesthetic using a largely warm material and colour palette. Its rich ambience is enhanced by a large back-lit wall installation. The lounge, contrastingly, has a relaxed ambience, with deep-hugging grey sofas and accent cushions. The flooring employs rough *cudappah* stone in its natural form, which complements linear bands of wallpaper at the ceiling level. The dining table that can seat ten people is a glowing, square box of laser-cut corian with a glass top. The kitchen hosts a wide-island counter finished in blue composite stone-toughened lacquered glass in shades of blue adds a dash of colour to the space's largely monochromatic décor. The upper floor houses a foyer, a bedroom suite, a family lounge, a massage/meditation room, and a multi-purpose space. The ambience, intended to be youthfully classy, is driven by innovative lighting design. A courtyard, and a skylight within the lounge space, helps bring in abundant natural light. A guest room that sits at the rear of the floor-plate employs a subtle mix of warm colours. The meditation room features vertical wall louvers that open up to the North-east, bringing in beautiful indirect daylight. Wrapped within the story of its owners, this residence crafts its own identity amidst an urban setting.





FIRST LEVEL PLAN

- 1 Lobby
- 2 Dining Area
- 3 Kitchen
- 4 Drawing Room
- 5 Family Lounge
- 6 Powder Room
- 7 Bedroom
- 8 Walk in Closet
- 9 Toilet
- 10 Courtyard



SECOND LEVEL PLAN

- 11 Meditation Room
- 12 Lounge
- 13 Gym
- 14 Powder Room
- 15 Bedroom 1
- 16 Wardrobe
- 17 Toilet 1
- 18 bedroom 2
- 19 Wardrobe
- 20 Toilet 2





Top Left: The ten-seater dining space features a custom-designed table that manifests as a glowing square box in laser-cut Corian.
Top Right: The rich ambience of the formal living room is enhanced by a large back-lit wall installation that acts as a focal element.



A spirit of warmth permeates the formal living room, furniture in dark wood and leather complements potted plants and a rug finished in pastel hues



Several distinct elements come together to enliven the ambience of the living room.







Facing Page: The terrace houses a bright yellow recliner and a green wall that provide the residents a serene place to relax
 Top: The large island adorned by comfortable high chairs manages to equip the kitchen for a large family dinner without losing its elegance

MATERIAL SPECIFICATIONS

Flooring: Italian Diana Stone, Italian Dark Emperador, Kadappa Stone, Jaisalmer Stone, Granite
Wall: Kadappa Stone, Dark Emperador with art work in MOP, Marshalls Wallcoverings, Green Decowood Veneers, Saint-Gobain Lacquered Glass
Lighting: Wipro Surface Lights & LED Strips, Decorative hanging lights sourced from Guangzhou, China
Kitchen: N/A
Bathroom: Artize & Jaquar
Furniture & Decor: Sourced from Guangzhou, China

